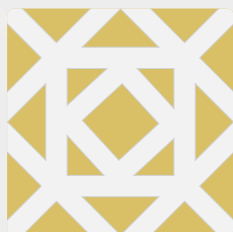




HK INDUSTRIES
Minting Machinery Leader

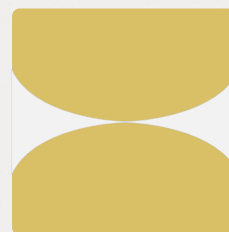
*Powerful **Laser's** for Jewellery.*



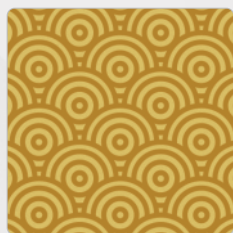
Cutting



Marking



Soldering



Engraving



3D Engraving



Color Marking

HK Industries is a leading manufacturer and exporter of advanced laser jewellery machinery and solutions. With years of expertise, we deliver innovative, high-performance machines that boost productivity and precision. Our focus on quality and customer satisfaction has earned us a trusted reputation in the industry. Discover our range of cutting-edge laser needs of jewellers and manufacturers worldwide.



22K916



Glimmer Pulse - Jewellery Laser Cutting & Marking

Glimmer Pulse is designed for Gold & Silver crafting, fine cutting, superb engraving, Inside & outside rotation marking for Bangles & Ring, Flat Marking

Features



Motorized



Micro Cutting



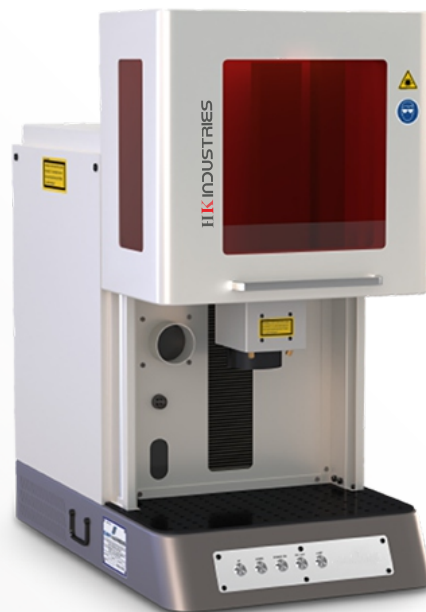
Superb Engraving



Table Type



Minimum Loss
with Fume Extraction



Optional Laser Power

Model	iMPRINT Glimmer Plus		
Laser Power	30w	50w	60w
Wavelength	1064nm		
Min. Line Width	0.03mm	0.03mm	0.03mm
Modulating Frequency	10kHz - 500kHz		
Marking Size (mm)	100*100/175*175		
Cooling Way	Air Cooling		
Power Requirements	220V+/50Hz/2.5A		
Preview	Red Light		
Power Consumption	>500w		
Marking Speed	4000 nm/min		
Weight	78 Kg		

Machine Size: Width 17 x Depth 29 x Height 32 (inches)



OrnaPrecision - Jewellery Laser Cutting & Marking

OrnaPrecision is designed for Gold & Silver crafting, fine cutting, superb engraving, Inside & outside rotation marking for Bangles & Ring, Flat Marking

Features



Motorized



Micro Cutting



Superb Engraving



Closed Cabinet



Camera/Optional



Minimum Loss
with Fume Extraction



Optional Laser Power

Machine Model	iMPRINT - OrnaPrecision				
Laser Power	50w	60w	80w	100w	120w
Wavelength	1064nm				
Min. Line Width	0.02 to 0.03mm				
Modulating Frequency	10kHz - 500kHz				
Marking Size (mm)	100*100/150*150/200*200				
Cooling Way	Air Cooling				
Power Requirements	220V +/-50Hz/2.5A				
Preview	Red Light				
Power Consumption	>500w				
Marking Speed	4000 nm/min				
Weight	98 Kg				

Machine Size: Width 30 x Depth 32 x Height 64 (inches)



Elegance Mark - Laser Hallmarking

Elegance Mark Open Series designed for jewellers & hallmarking applications for fine spot marking & complex shape Micro Marking. Easy & Portable.

Features



Motor /Manual
AXIS.



Micro Marking



Foot Operating

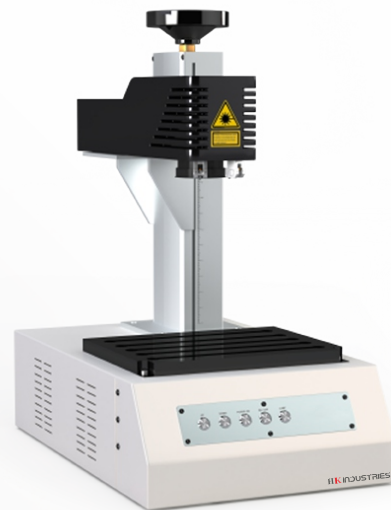


Table Type

Optional Laser Power

Pulse fiber laser	20w	30w
Wavelength (nm)	1060-1085	
Polarization	Random	
Working Stroke	300mm	
Nominal average output power (W)	≤20	≤30
Single pulse energy (mJ) @20kHz	1	1@30kHz
Beam Diameter (mm)	6~8	
Pulse duration (ns) @20kHz	<120	<120@30kHz
Pulse Repetition Rate (kHz)	20-60	30-60
Output Power Tenability (%)	10-100	
Output Fiber Cable length (m)	2.0	
Power consumption (20°C) Voltage	240v	
Cooling	Forced Air Cooled	
Marking Speed	4000 nm/min	
Weight	65Kg	68Kg

Machine Size: Width 16 x Depth 26 x Height 28 (inches)



Elegance - Flexible Laser Engraving & Marking

Elegance Table type Designed for Various industries
Marking & Engraving Applications Flexible Working Area,
Customised Unit as per requirements.

Features



Flexible
Work Station



Customisation



Superb Engraving
/Marking



Lamp

Optional Laser Power

Pulse fiber laser	20w	30w	50w
Wavelength (nm)	1060~1080nm		
Polarization	Random		
Working Stroke Axis	100-700mm		
Nominal average output power (W)	≤20	≤30	≤50
Single pulse energy (mJ) @20kHz	1	1@30kHz	1@50kHz
Beam Diameter (mm)	6~8		
Pulse duration (ns) @20kHz	<120	<120@30kHz	<120@30kHz
Pulse Repetition Rate (kHz)	20-60	30-60	30-60
Output Power Tenability (%)	10-100		
Output Fiber Cable length (m)	2.0		
Power consumption (20°C) Voltage	240v		
Cooling	Forced Air Cooled		
Weight	78 Kg	80 Kg	100 Kg

Machine Size: Width 29 x Depth 28 x Height 60 (inches)



Engrave Master - 3D Metal Laser Engraver

Product characteristics Software Advantage:

- Support multi correction methods: fast and high precision correction on high precision ideal platform and free adjustment of each position focal point under the non-ideal plane, and finally achieve full format focus consistency.
- Support 3D application, support importing of STL model, self-developed model, etc. Support 3D data editing, rapid realization of 3D surface marking, relief processing.
- Support expansion of 3D scanning equipment, it can realize the rapid localization and reverse processing of 3D workpieces, and the rapid marking of work pieces can be realized without importing the workpiece model.

ITEM	UNIT	SPECIFICATION
Power Supply	Input Voltage (VAC)	220w
	Output Voltage (VDC)	±24
	Current (A)	10
Control Card	Output Interface	XYZ-100
	Laser Type	Fiber
Environmental	Ambient Temperature (0)	0-+50
Requirement	Storage Temperature (0)	-10-±60
Galvometer	Scan Angle (0)	±11.25
Specifications	Repeatability (μrad)	8
	Max. Gain Drift (ppm/k)	100
	Max. Offset Drift (μrad/k)	30
	Long -term drift over 8h (μrad)	0.5
	Maximum Processing Speed (Characters/s)	350@200x200
	Tracking Error (ms)	0.28
Optical	Aperture Size	20mm
Specifications	Subsystem input beam diameter	7mm
Weight	98 Kg	

Machine Size: Width 30 x Depth 29 x Height 66 (inches)



WeldMAX Series - Micro Jewellery Laser Welding

- Laser welding is an automated process.
- Repeatability of welding parameters and process conditions.
- High degree of control.
- There is no direct contact with the welding zone.
- There is no tool wear In general, no filler material is used
Laser welding can be applied to join different materials
(either to themselves or dissimilar materials)

Features



Camera
View Optional



Solder Joint
Size 0.2-3.0mm



Touch Screen
Joystick Control



Optional Laser Power

Laser Power	150w	200w
Wavelength	1064nm	
Laser Type	ND:YAG	
Pump Source	Xenon Lamp	
Max. Single Pulse Energy	90J	120J
Pulse Width	0.1-20ms	
Frequency	0-100Hz	
Solder Joint Size	0.2-2.0mm	
Cooling Way	Water Cooling	
Power System	5KW	7KW
Power Requirement	220V±10%	
Weight	60 Kg	125 Kg
Dimension (WDH)	26 x 41 x 49 (inches)	



COLOURMAN - Colour Laser Series

- Portable & Powerful Laser Series.
- Mark, Cut and Imprint Colour on various gold carats up to 18K.
- Suitable for Jewellery Manufacturer, Factory, Job work.
- No need to fill any colour for Print.
- Zero maintenance.
- Friendly Software for Operating
- Very low power consumption.
- Rotation Marking

Optional Laser Power

Paused fiber laser	30w
Wavelength (nm)	1060-1085
Polarization	Random
Working Stroke	100mm
Nominal average output power (W)	≤20
Single pulse energy (mJ)	2.0@20kHz
Beam Diameter (mm)	6~8
Pulse duration (ns) @20kHz	1-1400ns
Pulse Repetition Rate (kHz)	1-600
Output Power Tenability (%)	10-100
Output Fiber Cable length (m)	2.0
Power consumption (20°C) Voltage	240v
Cooling	Forced Air Cooled
Weight	38 Kg
Dimension (WDH)	8 x 16 x 25 (inches)



Ultrapro HD Colour Printer

- Versatile compact flatbed model with high precision colour printing
- Custom production printing for all materials and products
- Reliable inkjet direct printer with smooth and sharp color quality
- Photorealistic images and a variety of print effects
- Smart, simple and easy customization workflow
- Day-to-day performance and portability, anywhere and anytime

Features



Vacuum System



Ricoh G6/G5/G5i



RiP Software



Negative Pressure

Optional Laser Power

Printer Size	297mm*420mm
Printing Thickness	0-85mm
Printing Accuracy	Max 1200dpi
Voltage	AC220/110±10, 50HZ-60HZ
Graphic Format	Tiff, Jpg, Eps, Pdf, Png, Ai, Psd
Working Environment	Temperature 20-28°C, Humidity 35%-65%
Weight	60 Kg
Dimension (WDH)	1000 x 902 x 592 (±10mm)





HK INDUSTRIES
Minting Machinery Leader

Manufacturer Of All Types **Gold** and Silver Jewellery
Making Machines.

Regd. Office: Plot No. 351/2, Road No. 38 GIDC Estate, Opp. Water Tank,
Odhav, Ahmedabad 382415, Gujarat (INDIA)

Contact: +91 98254 40732 | +91 96622 57111

Email: info@hkind.in | adityamalvi779@gmail.com



www.goldsmithmachinery.com